

NOVEMBER



IN
OTHER PEOPLE THINK 2012, BY ALFREDO JAAR.
IN HIS NEW YORK STUDIO, SEE PAGE 098

INTERIORS

- 232 | Masters of suspense
We're particularly hung up
on the latest pendant lights

MEDIA

- 227 | WallpaperSTORE*
Refined design, delivered to your door
- 228 | Subscribers since... 1996
Shelf-indulgence chez Sir John
and Lady Frances Sorrell

RESOURCES

- 264 | Stockists
What you want and where to get it

THAILAND REVEALED

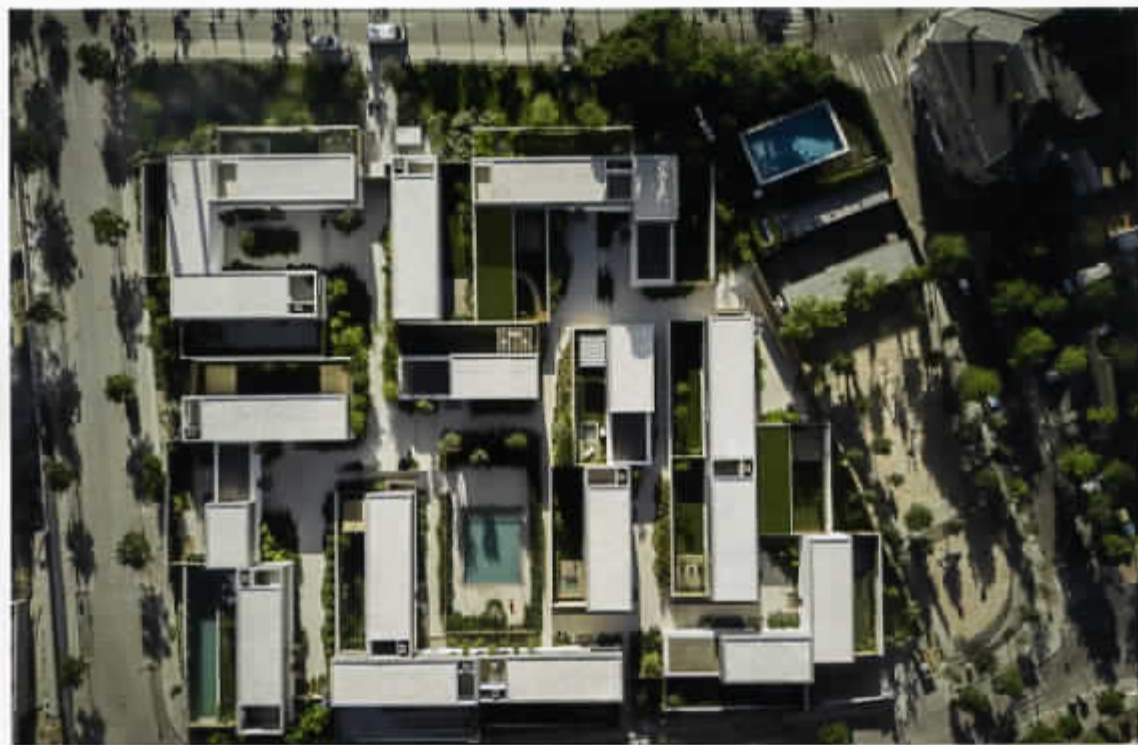
- 211 | Sixteen pages of contemporary
craft, design and creativity

TRAVEL

- 192 | Rooms on top
Best Urban Hotel awards preview -
the judges and shortlist
- 203 | Checking in
Indulge in a spot of amateur astronomy
in the Alentejo region of Portugal
- 205 | Departure info
From monochrome magic in Moravia
to a hilltop fort retreat in Rajasthan

OFFICEPAPER*

- 155 | News
Design's latest workplace wonders
- 159 | Flight control
Derwent London's
uplifting Savile Row refit
- 164 | Learning curve
From Helsinki's Think Corner
to a fab Toronto lab, university
architecture earns top marks
- 172 | On a roll
We're resurfacing in style
- 177 | Multi-task force
Hard-working office spaces
- 182 | Bunker down
The ultimate power base



ARCHITECTURE

- 076 | **Triple time**
Richard Rogers, Graham Stirk and Ivan Harbour preview future projects and mark a perfect past ten years
- 104 | **Model village**
Marcio Kogan's micro-town in Madrid
- 120 | **Dream factory**
The making of Vitsoë's visionary HQ
- 126 | **Tropical mix**
Midcentury and modern sit in harmony in a São Paulo pad
- 132 | **Heavy plant**
A hotel magnate's brutalist base in Mexico City has us green with envy

ART

- 098 | **Shining light**
Artist Alfredo Jaar brings politics and human rights to the table

DESIGN

- 073 | **Empire line**
Design studio Objects of Common Interest is in a New York state of mind
- 085 | **Red lines**
Tate Modern's graphic Soviet stockpile
- 092 | **Yours trulli**
Revitalising a Puglian furniture giant



A PEDESTRIAN-ONLY COMMUNITY BY STUDIO MK27 IN SOMOSAGUAS, MADRID, SEE PAGE 104

NOVEMBER



SCOTTISH CHEF RUTH BARRY AT HER NEW BLACK ISLE BAKERY IN BERLIN'S MITTE. SEE PAGE 110

FASHION

- 083 | **Spiritual lift**
A Danish-designed high point at Shamballa Jewels' first New York store
- 238 | **Smart move**
We're relocating to a Gianni Botsford-designed London townhouse

FOOD

- 252 | **Crunch time**
We're doing surprising things with our nuts
- 266 | **Artist's palate**
Not Vital's *plain in pigna*

FRONT OF BOOK

- 059 | **Newspaper**
Accessories get the padded sell, nicer rice, and natural mouth maintenance
- 070 | **The Vinson View**
Picky Nicky on what makes a museum

INTELLIGENCE

- 089 | **High wire act**
A one woman cultural exchange is connecting Europe and China
- 110 | **Counter moves**
The chefs beefing up Berlin's dining scene
- 140 | **Guiding forces**
A life-changing year in the Rolex Mentor and Protégé Arts Initiative



A FORAY INTO GLASS AND RESIN BY DESIGN STUDIO OBJECTS OF COMMON INTEREST. SEE PAGE 073

NOVEMBER



OTHER PEOPLE THINK 2012, BY ALFREDO JAAR, IN HIS NEW YORK STUDIO, SEE PAGE 098

INTERIORS

- 232 | Masters of suspense
We're particularly hung up
on the latest pendant lights

MEDIA

- 227 | WallpaperSTORE*
Refined design, delivered to your door

- 228 | Subscribers since... 1996
Shelf-indulgence chez Sir John
and Lady Frances Sorrell

RESOURCES

- 264 | Stockists
What you want and where to get it

THAILAND REVEALED

- 211 | Sixteen pages of contemporary
craft, design and creativity

TRAVEL

- 192 | Rooms on top
Best Urban Hotel awards preview –
the judges and shortlist
- 203 | Checking in
Indulge in a spot of amateur astronomy
in the Alentejo region of Portugal
- 205 | Departure info
From monochrome magic in Moravia
to a hilltop fort retreat in Rajasthan

OFFICEPAPER*

- 155 | News
Design's latest workplace wonders
- 159 | Flight control
Derwent London's
uplifting Savile Row refit
- 164 | Learning curve
From Helsinki's Think Corner
to a fab Toronto lab, university
architecture earns top marks
- 172 | On a roll
We're resurfacing in style
- 177 | Multi-task force
Hard-working office spaces
- 182 | Bunker down
The ultimate power base